

Web Decomp and E-decomp -Time Series Analysis using R

Seisho Sato
(The Institute of Statistical Mathematics)

<http://www.ism.ac.jp/~sato/>

Decomp

- originally developed by Kitagawa(1984).
- for seasonal adjustment and trend estimate.
- written by Fortran.
- using Square Root Filter.

Decomp family

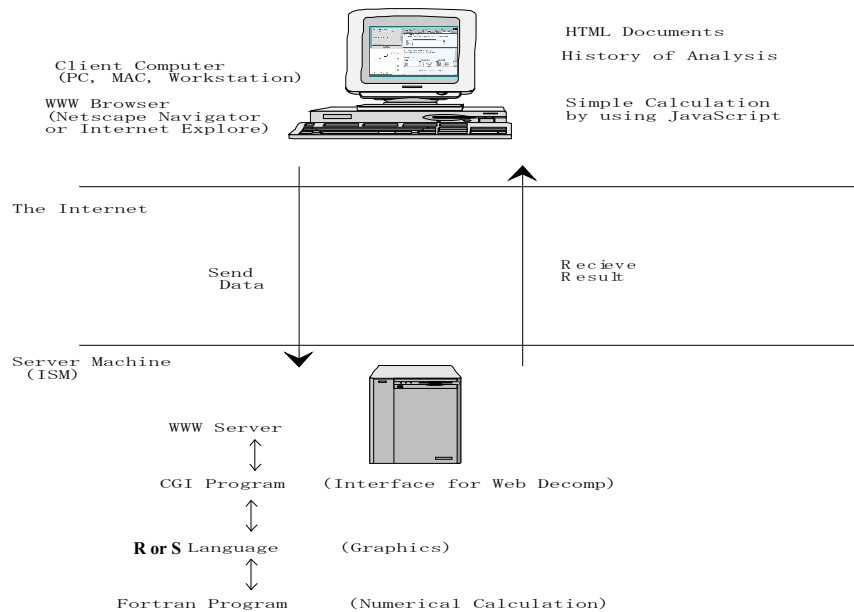
- Timsac84 (Fortran)
- Tsview.uni (S)
- Web Decomp (CGI & S or R)
- S-Decomp (S)
- MITI-Decomp (S & Excel)
- E-Decomp (Excel VBA & R)

↖
R-(D)COM interface
(by Thomas Baier)

Concepts of “Web Decomp”

- ◆ A WWW Site
- ◆ **Statistical Software of Time Series model including Seasonal Adjustment model (Decomp)**
- ◆ **All Calculation can be done by server machine**

Fig 1. System of Web Decomp



Menu of “Web Decomp”

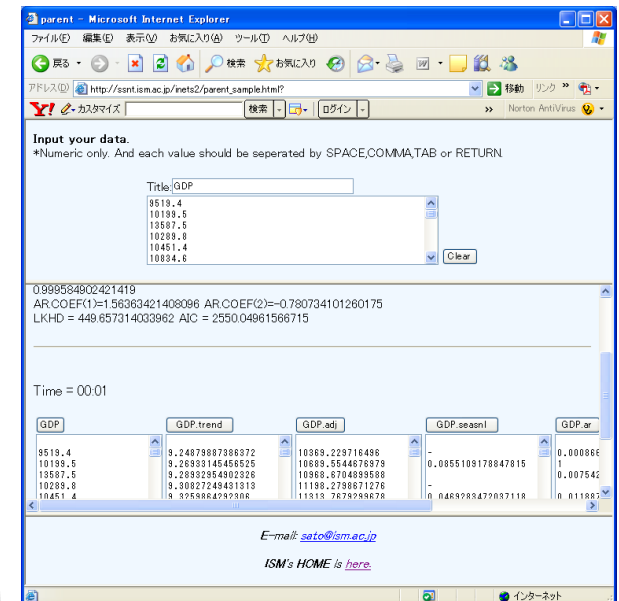
- Decomp -----
State space modeling of seasonal adjustment
(Kitagawa and Gersh 1984)
- plot -----
Time series plot
- autocor -----
Plot of autocorrelation (TIMSAC72)
- spectrum -----
Non-parametric spectrum (TIMSAC72)
- ARfit -----
Fitting AR model (TIMSAC72)
- ARMAfit -----
Fitting ARMA model (Kitagawa(1993))
- log -----
Log-transformation

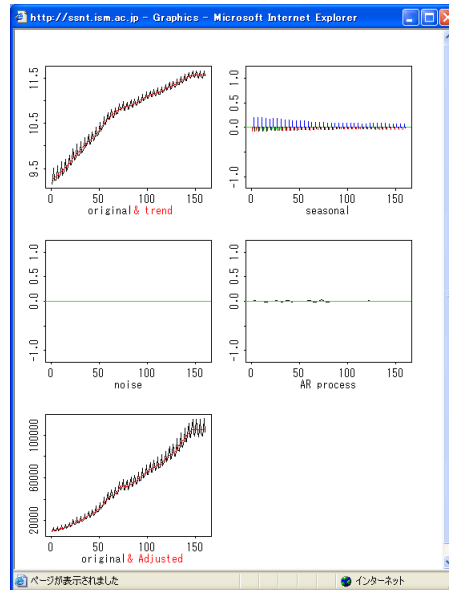
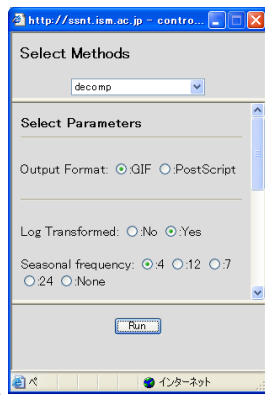
Menu of “Web Decomp”

- ◆ diff -----
First difference
- ◆ diff4 -----
Seasonal difference for quarterly data
- ◆ diff12 -----
Seasonal difference for monthly data
- ◆ Volatility -----
Fitting Stochastic Volatility model

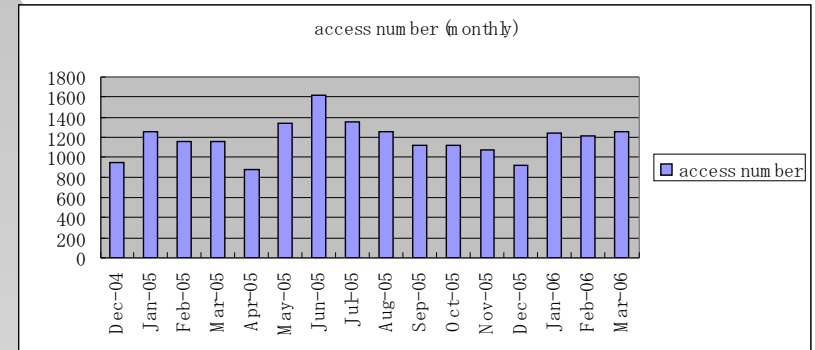
(More methods will be added)

Windows of Web Decomp





access numbers of Web Decomp



Total = 18871

About Decomp

State Space Model

$$\Delta^d T(t) = e1(t)$$

$$S(t) = -S(t-1) - \dots - S(t-p) + e2(t)$$

$$A(t) = a1 A(t-1) + \dots + aq A(t-q) + e3(t)$$

$$y(t) = T(t) + S(t) + A(t) + TD(t) + e4(t)$$

T: Trend

S: Seasonal

A: AR (Cyclical component)

TD: Trading day

y: Observation

e1-e4: i.i.d noise

Parameter of Decomp

•Log transform:

•Seasonal frequency:

•Trend Order:

•AR Order:

•Trading Day Effects:

Output

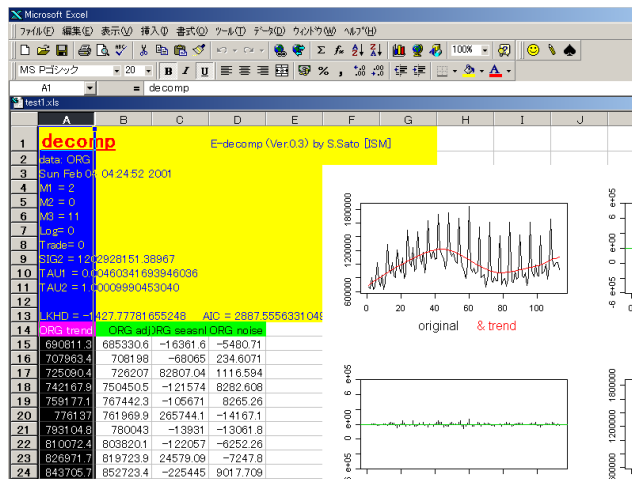
- Graph output
- Data output
- Value of parameter and other statistics

Summary of access list

(Jun. 1997 - Jan. 1998)

*.AC.JP	(apanese Education)	1414
*.OR.JP	(rovider etc.)	786
*.NE.JP	(rovider, OCN etc)	759
*.CO.JP	(apanese company)	726
*.COM	(S company)	284
*.GO.JP	(apanese government)	171
*.AD.JP	(rovider, Mesh etc)	152
*.NET	(S)	66
*.EDU	(S Education)	53
*.TW	(aiwan)	23
*.HR	(roatia)	17
*.DE	(emany)	17
*.UK, *.GB	(K)	14
*.TOKYO.JP	(okyo Metro)	14
(unknown)		1439

E-Decomp



E-Decomp

